

DOUBLE-PISTON QUARTER TURN ACTUATORS

TYPE SAD - M 180°

Technical Data

Design :	Pneumatic double-piston 180° actuator with a 90° middle position
Design features :	Rack-and-pinion system, piston guide via guide rods
Angle of rotation :	Fixed rotation angle 0° to 180° (normal operation) Pneumatic fixed 90° middle position
Air pressure supply :	min. 2 bar, max. 8 bar
Operating medium :	Dry and filtered compressed air
Ambient temperature :	-25°C to +80°C
Mounting position :	any
Resistance to corrosion :	Industrial atmosphere
Lubrication :	Life time lubrication with grease ISO 51825-K2K-30
Seals :	NBR-O-Rings, 70 Shore
Coatings :	Housing anodized and colour sealed End caps - CED Cathodic electrodeposition
Maintenance and inspection :	AMG actuators are free of maintenance within the life time. Provided that: <ul style="list-style-type: none">• the actuator is properly mounted• the operating medium used is clean and non-aggressive• the actuator is operated under normal ambient conditions• the actuator is used in compliance with the intended use (see assembly and maintenance manual)
Applied standard :	DIN EN ISO 5211, DIN EN 15714-3, VDI / VDE 3845, DIN 79



SAD - M 180°

AMG-**PESCH**®

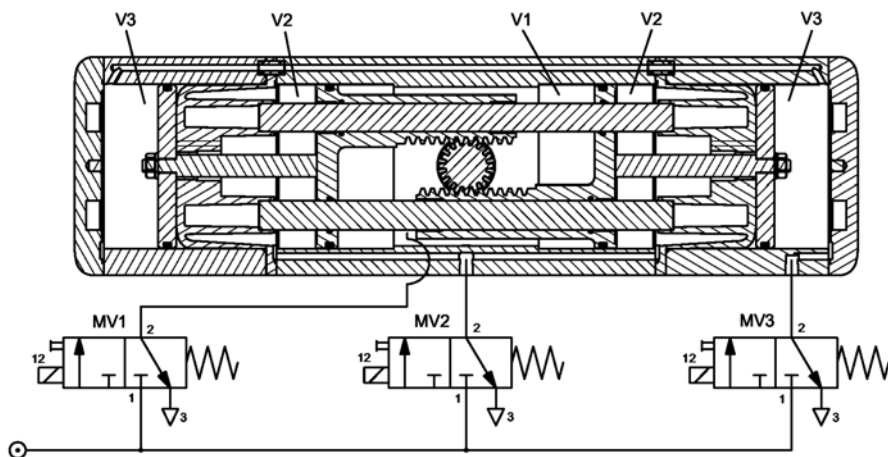


an **ERIKS** company

AMG-**PESCH** GmbH
Adam-Riese-Straße 1
D - 50996 Köln
Tel.: +49-(0) 22 36 - 89 16 - 0
Fax: +49-(0) 22 36 - 89 16 - 73
info@amg-pesch.com
www.amg-pesch.com

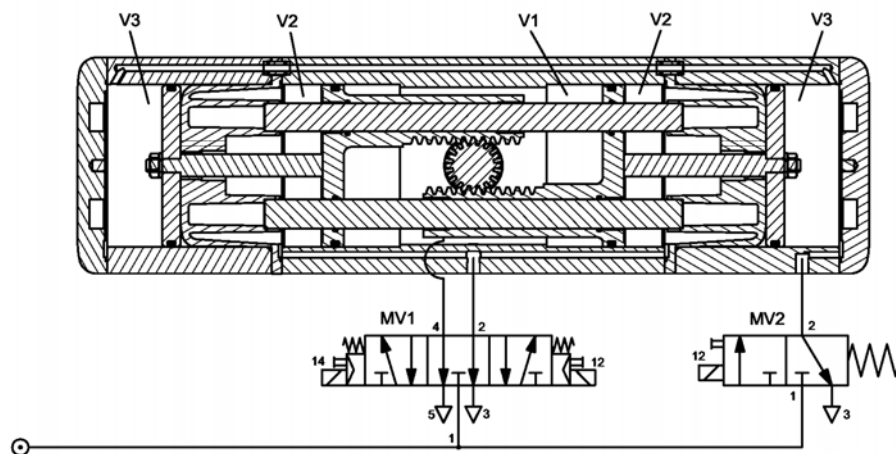
DOUBLE-PISTON QUARTER TURN ACTUATORS
TYPE SAD - M 180°

Control for SAD-M 180° BR03 with 3x 3/2 - way solenoid valve
drawn at 90° center position



switch position from - to	MV1 12	MV2 12	MV3 12
0° - 90°	1	0	1
90° - 180°	1	0	0
180° - 90°	0	0	1
90° - 0°	0	1	1
0° - 180°	1	0	0
180° - 0°	0	1	1

Control for SAD-M 180° BR03 with 1x 3/2 - way and 1x 5/3 - way solenoid valve
drawn at 90° center position

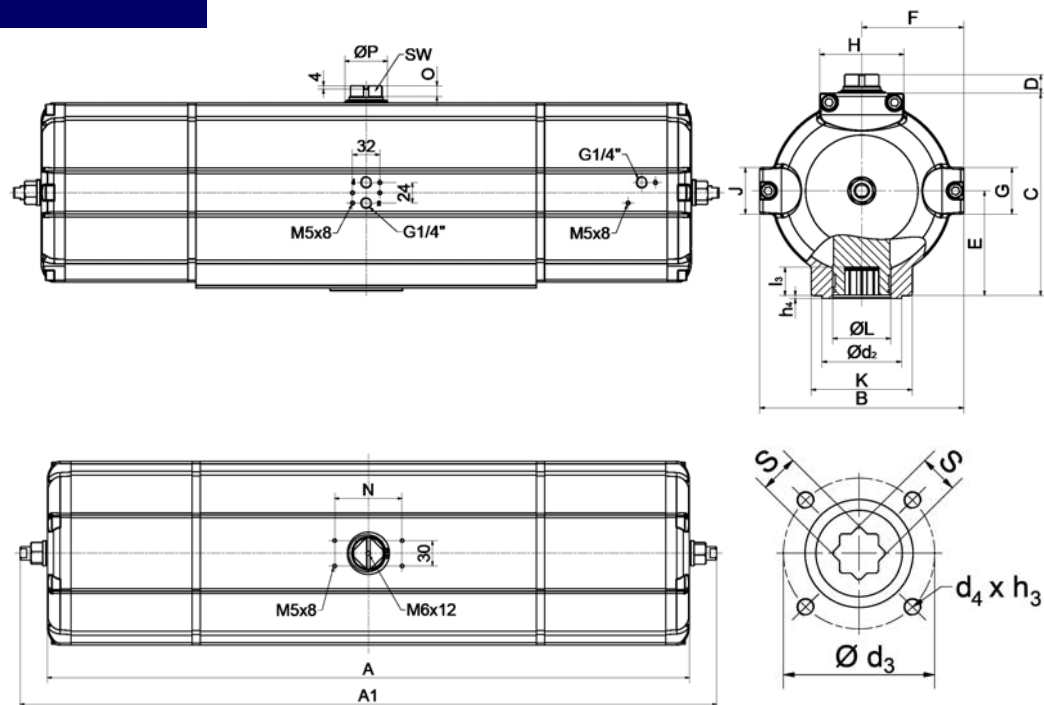


switch position from - to	MV1		MV2
	14	12	12
0° - 90°	1	0	1
90° - 180°	1	0	0
180° - 90°	0	0	1
90° - 0°	0	1	1
0° - 180°	1	0	0
180° - 0°	0	1	1

TYPE SAD - M 180°

Size	30
Weight [kg]	
Type SAD - M	24,5
Stroke volume [dm³]	
Type SAD - M	6,5
Operating times [sec.] ¹⁾	
Type SAD - M OPEN	1,4
Type SAD - M CLOSE	1,4

1) operating times at 4,5 bar air pressure supply without load (standard values)

[illegible]

Design	SAD - M
Size	30
A	637
A1	-
B	174
C	174
D	20
E	89
F	87
G	50
H	64
K	90
Ø L	47
J	50
Ø M	145
N	80
O	12
Ø P	36
SW	17
Connection ISO 5211	F10
Ø d ₂	70
Ø d ₃	102
d ₄ x h ₃	M10x16
Number of screws	4
h ₄	3
l ₃	25
s	22

AMG-PESCH®



AMG-PESCH GmbH
Adam-Riese-Straße 1
D - 50996 Köln
Tel.: +49-(0) 22 36 - 89 16 - 0
Fax: +49-(0) 22 36 - 89 16 - 73
info@amg-pesch.com
www.amg-pesch.com